



NEWS

k-Space Associates Inc., 2182 Bishop Circle East, Dexter, MI 48130 USA

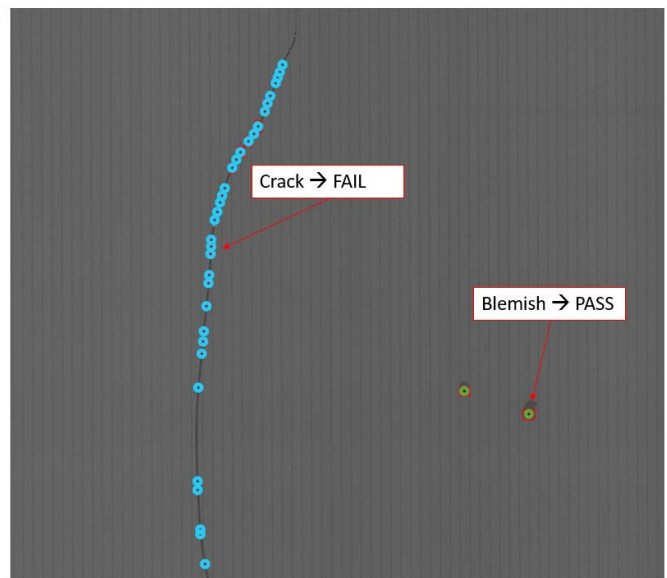
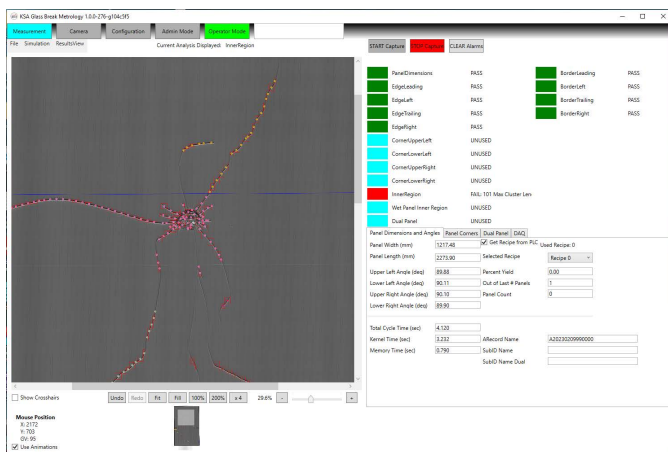
Tel. +1 (734) 426-7977 • Fax +1 (734) 426-7955 • requestinfo@k-space.com • www.k-space.com

FOR IMMEDIATE RELEASE

Contact: Brian Hall, k-Space Associates, Inc., bhall@k-space.com

Cracks Versus Blemishes. How the k-Space Glass Breakage Metrology System Tells the Difference.

(Dexter, MI, February 15, 2023) - The kSA Glass Breakage & Defect Detection tool is a vision-based metrology system that determines Go/No-Go (Pass/Fail) conditions for every glass lite and panel it inspects inline during processing. It identifies cracks, chips, scratches, digs, pinholes, and numerous other factors for both clear and transparent glass as well as opaque glass.



Acceptable blemishes pass through

An innovative new feature of this tool is how it determines what is a crack versus what is merely a blemish. To achieve this, the software algorithm uses a cluster analysis that strings found defects together to represent cracks.

This allows the system to correctly identify cracks as distinct from blemishes.

The Glass Breakage & Defect Detection tool can be customized to the manufacturer’s unique product dimensions, standards, manufacturing processes, and production volumes.

The glass defect detection tool can reduce downtime, scrap costs and returns, and make for a safer work environment.

Photo eyes detect the leading and trailing edges of the panels and trigger the system to start and stop data collection. Factory integration capabilities enable users to incorporate the tool into their existing systems, including factory alarms, PLC, email alerts, QC, and more.

For more information on k-Space's customized glass metrology tools visit <https://k-space.com/industrial-metrology/glass-inspection/>.

About k-Space Associates, Inc.

k-Space Associates, Inc. (www.k-space.com) is a leading supplier of advanced metrology instrumentation and software used in research and production facilities around the world. Through extensive customer input, close collaboration with its worldwide customer base, and a strong commitment to unparalleled technical support, k Space has developed today's most powerful thin-film metrology and industrial metrology tools. To learn more visit www.k-space.com.