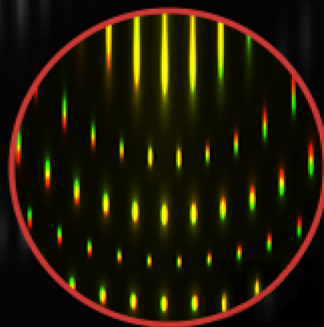
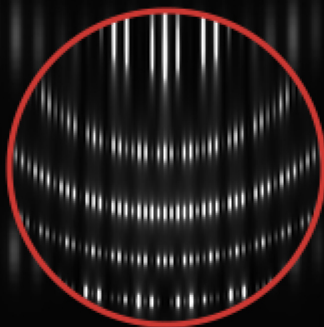
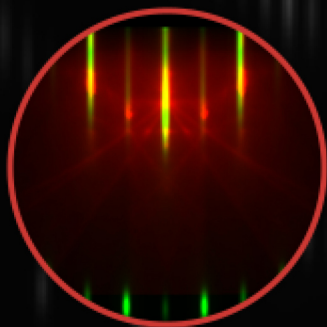


Introducing **kSA RHEEDSim**

New RHEED Simulation Software from k-Space



- With kSA RHEEDSim, you define the crystal surface and your experimental parameters.
- Compare actual experimental RHEED patterns to simulated RHEED patterns.
- Track the behavior of RHEED under changing conditions.
- Simulate RHEED patterns for a wide range of crystal surfaces.
- Can be integrated with kSA 400, the world's leading analytical RHEED system.

**Discounts for
classrooms and
kSA 400 users**



Visit k-space.com
Putting Light to Work Since 1992

