



Introduction

k-Space engineers perform custom and unique installations of our metrology instruments and software at sites all around the world. Whenever we document a process, tip or shortcut that proves to be especially helpful to one of our customers, we like to make sure to pass this information on to everyone.

The following are two of these helpful tips, both taken from our BandiT application, and both dealing with the use of kSA personality files (*.ksaxml).

Saving BandiT Settings

Most BandiT users already know that they can save a recipe file that defines the algorithms used for a specific type of measurement. A lesser-known fact is that all application settings, including those that determine which windows or charts are displayed when launching the software, can be saved for quick reference and then accessed at any time through the **Save Settings** feature.

This powerful feature allows users to create custom personality profiles, or *.ksaxml* files, for different acquisition modes and or materials (e.g. Band Edge mode with various substrates, Pyrometry/Blackbody mode, etc.). Basically any BandiT setting that gets updated in the registry can be stored and retained whenever you open the BandiT application.

To create a custom personality profile:

1. Make sure that all of your custom settings are exactly the way you want them, and that any dialogs/ graphs that you want displayed appear in the main display area.
2. Close the acquisition dialog – this will close all other windows as well (the software will not permit you to save settings with an active acquisition dialog open).
3. Click **Options/Save Settings** from the main menu bar (Figure 1).
4. Name the file appropriately and save it to the following default location (Figure 2):
C:\username\Documents\kSA\kSA BandiT
5. Click **Save**. The software will proceed to save all BandiT settings, including your custom settings (this process may take several seconds to complete).

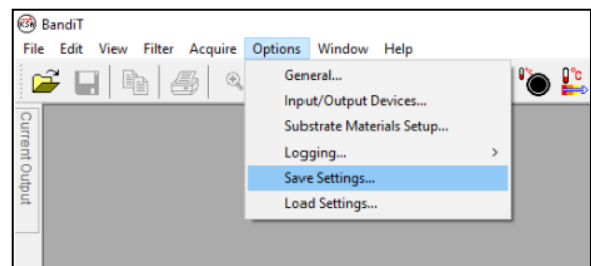


Figure 1: Using the Save Settings feature

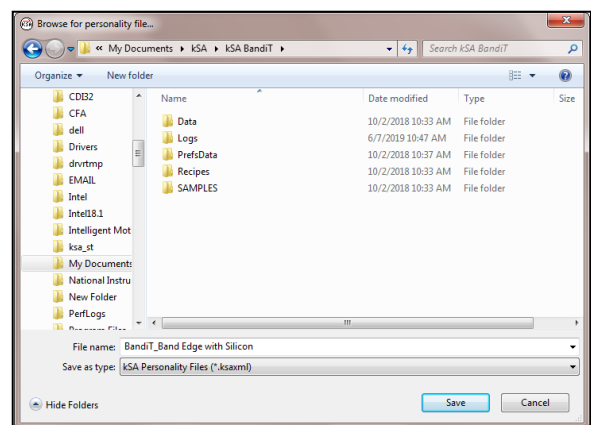


Figure 2: Naming the personality file



Tips for Personalizing BandiT Setting Profiles

- That's it! The next time you open the software just go to **Options/Load Settings** from the main menu bar and then select the personality file you created. Your custom settings will be applied immediately.

Note: If you want the current settings to be loaded the next time you open the application, go to **Options/General** from the main menu and select the **Save settings at program exit** option (Figure 3).

Linking BandiT Settings to a Shortcut

As mentioned above, the ability to save settings unique to a certain acquisition mode or material is an extremely useful feature. Another helpful technique is to link different personality files to separate shortcuts, therefore allowing custom settings to be pre-loaded based on the shortcut used.

This is especially helpful in a lab setting, where multiple users may perform different types of measurements on different materials or substrates. In this case, each user could have their own BandiT Shortcut that would automatically load a custom .ksaxml file when launched.

To link a personality file to a shortcut:

- Create a new shortcut by right clicking on the desktop and then choosing **New/Shortcut**.
- Choose the BandiT executable file for the link **Location** (C:\Program Files\{x86}\kSA\kSA BandiT\PROGRAM\BandiT.exe). Click **Next**.
- Type a unique name and then click **Finish**.
- Now right click on the shortcut you just created and choose **Properties**.
- Click on the **Shortcut** tab (Figure4).
- Insert a double quote at the end of the path in the **Target** field.
- Using **File Explorer**, navigate to the location of the .ksaxml file that you wish to have pre-loaded (the default is C:\username\Documents\kSA\kSA BandiT) and then copy the complete path, including the file name.

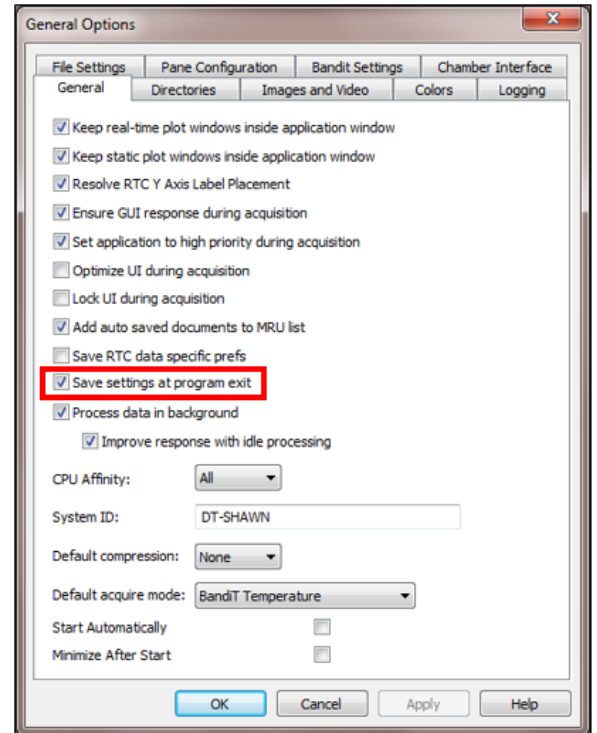


Figure 3: Auto Save option in General Options

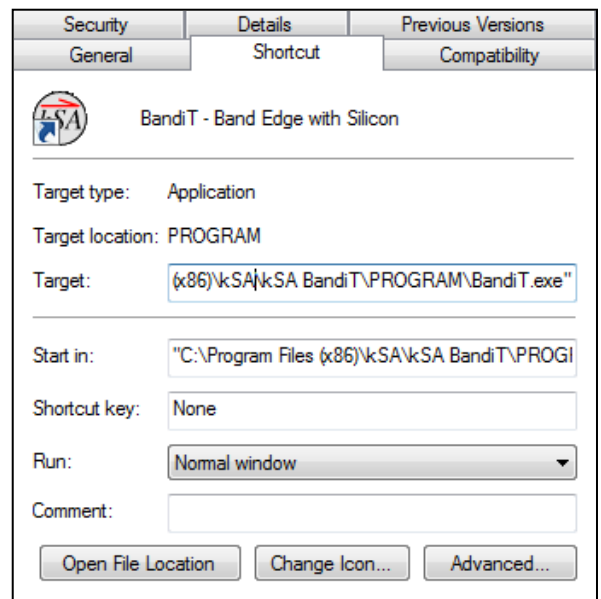


Figure 4: Shortcut properties



Tips for Personalizing BandiT Setting Profiles

8. Paste this entire path immediately following the double quote at the end of the **Target** field and then add one more double quote at the end (Figure 5).
9. Click **OK**. Your personality profile will be automatically loaded the next time you launch BandiT from this shortcut.

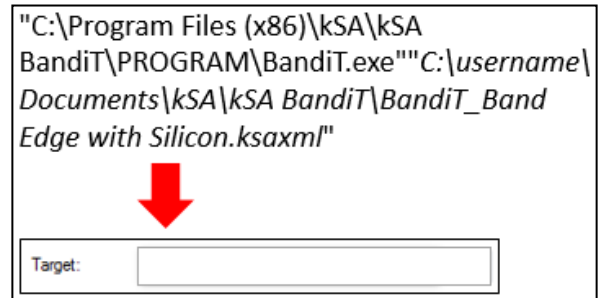


Figure 5: Example path for Target field